

Contact Information: Akaiwa City Business and Tourism / Akaiwa City Tourist Association
TEL 086-955-6175 (Direct Dial)



Akaiwa City
<https://www.city.akaiwa.lg.jp/kankou/index.html>

Akaiwa City Tourist Association
<https://akaiwa-kankou.jp/>



We hope you'll participate in the Furusato Nozei system
(hometown tax payment system) in Akaiwa City.

Hometown Tax Payment System Akaiwa

Updated: January 2025

Spread the news of
#AKAIWA on
social media ♡



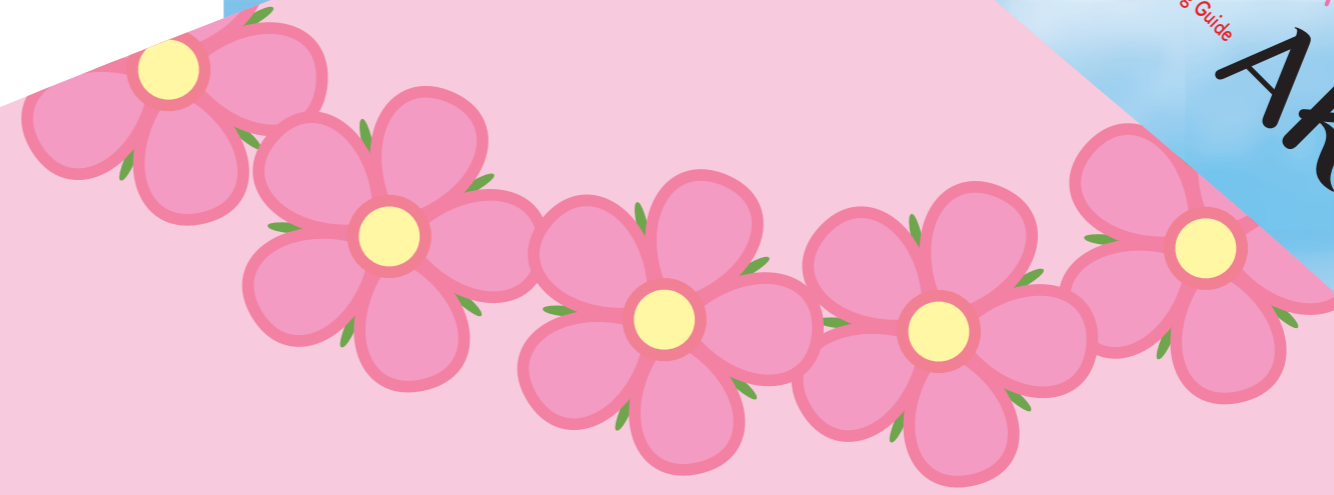
Hold this brochure in your hand and peek
into Momo-chan's eyes! It's a mask!
Try taking photos of yourself looking
through the Momo-chan mask at various
sightseeing spots in Akaiwa!

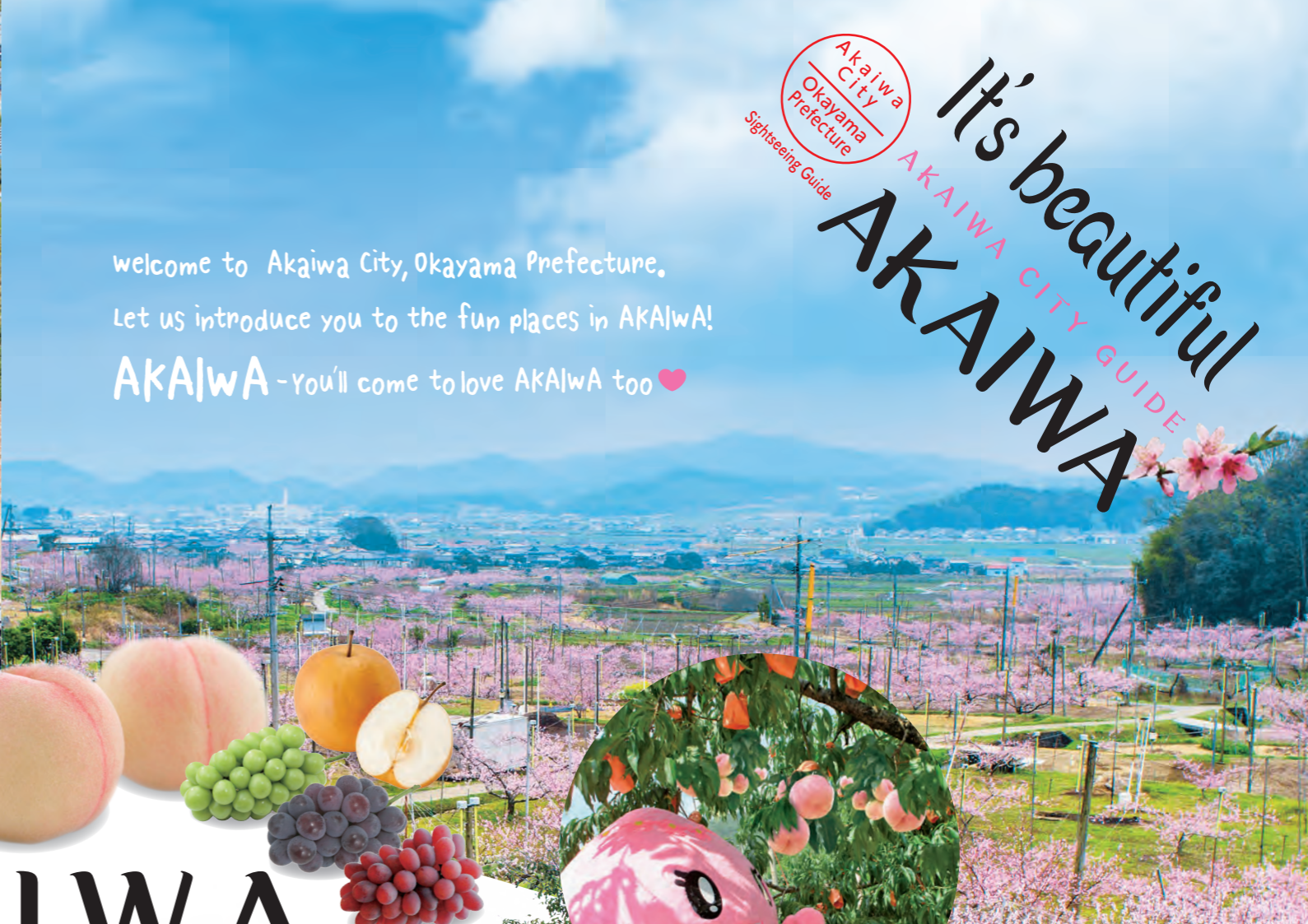


Akaiwa City
Okayama Prefecture



It's beautiful
AKAIWA CITY GUIDE
AKAIWA





Akaiwa City
Okayama Prefecture
Sightseeing Guide

It's beautiful
AKAIWA CITY GUIDE
AKAIWA

welcome to Akaiwa City, Okayama Prefecture.
Let us introduce you to the fun places in AKAIWA!
AKAIWA - You'll come to love AKAIWA too ♡



AKAIWA

AKAIWA CITY GUIDE



Akaiwa City Okayama Prefecture Sightseeing Guide

It's beautiful AKAIWA CITY GUIDE

AKAIWA Sightseeing Map



Let's visit AKAIWA together!

My name is **Momo-chan**.
I'm the mascot character for Akaiwa City!
Ask me anything about Akaiwa City!

contents

- Sightseeing Map ... P4.5
- An Overwhelming Presence
 - Historic Areas and Power Spots ... P6.7
- KA.ndo-Exciting Adventures
 - Camping and Experience Spots ... P8.9
- I.ro-Multi-colored Happiness
 - Fruit ... P10.11
- WA.tashi-My Delicacies
 - Specialty Products and Sake ... P12.13
- Cycling ... P14
- Events, Harvests/ Accommodations ... P15

I want you to know more about Momo-chan!!

Akaiwa City mascot character
AKAIWA Momo-chan



Official Website Official Twitter

How to access Akaiwa City Hall

- Access by car**
- Sanyo Expressway; Right outside of the Sanyo Interchange.
 - Chugoku Expressway; Take national route 374 from the Mimasaka Interchange, then head toward Okayama City on the prefectural highway Okayama Yoshii Line. It takes approximately 50 minutes.
- Access from the nearest station**
- JR Sanyo Line; Approximately 30 minutes by car from Okayama Station to Akaiwa City Hall.
 - Approximately 10 minutes by car from Seto Station to Akaiwa City Hall.
 - Approximately 25 minutes by car from Kumayama Station to Akaiwa City Hall.



Let's Go to AKAIWA



Akaiwa City Wide Area Bus Route and Public Bus



Uno Bus



- Akaiwa Hanameguri
- Akaiwa Farmer's Stands
- Fruit Picking
- Akaiwa Sake Brewery
- Momo-chan's sightseeing spots in this brochure

- Akaiwa Cycling Course**
- Kamiyadoru Pass Course
 - Kibi-no-Kuni Fruit & Legend Course
 - Kazekaoru Kumayama Breeze Try Course
 - Katatetsu Rail Romance Road
 - photospot

A

n Overwhelming Presence

Historic Areas and Power Spots

Romantic History, and Full of Power

The Kibi region in Akaiwa City is ancient, where the Kibi-no-Kuni had a large force alongside the Kinai and Izumo-no-Kuni. Discover the history and legends of the many remaining gigantic tombs and ruins, and feel the ancient romance.



Experience the power of ancient times!!



Chiarai Waterfall ^{MAP} 1

A mysterious two-level waterfall named after an ancient legend.



Koresato, Akaiwa City
TEL 086-954-1366
(Industrial Construction Division, Yoshii Branch, Akaiwa City)
Holidays/None, P/5 Automobiles



Ryogu-jinja Shrine in Front of the Ancient Tomb



Miraculous power object created by nature

Healing power spot enveloped in negative ions



Iwagami no Yurugiiwa ^{MAP} 2

Boulders that look unstable, yet, balanced; a popular spot for examinees.



Sobun 1172, Akaiwa City
TEL 086-957-4824
(Industrial Construction Division, Akasaka Branch, Akaiwa City)
Holidays/None, P/3 Automobiles

A pyramid in Akaiwa!! A national historic site.

Kumayama Ruins ^{MAP} 3

(National Historic Site)

A mysterious stone ruin at the highest peak of Akaiwa City. Popular Power Spot



Okuyoshihara, Akaiwa City
TEL 086-966-6310 (Kumayama Ruins Administration Building)
Holidays/None, P/20 Automobiles



Giant Natural Cedar Tree



Kumayama-jinja Shrine



Ashio-jinja Shrine ^{MAP} 4

Affectionately known as "Ashio-san," that works wonders for foot illnesses.



519 Wada, Akaiwa City
TEL 080-5750-6359
Free to visit
P/20 Automobiles



Ryoguzan Ancient Tomb ^{MAP} 5

(National Historic Site)

The largest keyhole-shaped burial mound in the Bizen region, offering ancient romance and mysteries.



Hosaki-Wada, Akaiwa City
TEL 086-955-0710 (Akaiwa City Board of Education, Social Education Division)
Holidays/None
P/25 Automobiles
(Use the parking lot of Wakahime No Sato. Large Vehicles Allowed)



Bizen Kokubunji Temple Remains ^{MAP} 6

(National Historic Site)

The remains of the giant temple building, designated a National Historic Site.



Maya, Akaiwa City
TEL 086-955-0710
(Akaiwa City Board of Education, Social Education Division)
Holidays/None
P/25 Automobiles
(Use the parking lot of Wakahime No Sato. Large Vehicles Allowed)



Isonokami-Futsumitama-jinja Shrine

This shrine is derived from the extermination of the giant serpent by Susanoonomikoto.



1448 Ishikami, Akaiwa City
TEL 086-724-2179
Holidays/None, P/30 Automobiles



Kaminoyadoruki ^{MAP} 8

A power spot where it is said that a god has resided since long ago.



Niborihigashi, Akaiwa City
TEL 086-955-6175
(Akaiwa Tourist Association)
P/None



Kibi Rebellion and Wakahime



The story of the Wakahime, which remains in "Nihon Shoki (Chronicles of Japan)" compiled at the behest of Emperor Tenmu. What happened in the fate, toying with love and power because of the beauty...



9 Yoshii Kyodo Resource Center



13 Stone-built 13 Layered Tower



10 Akasaka Tekijuku



14 Den Ashikaga Yoshimasa Kuyo Tower, Den Hino Tomiko Tomb Tower



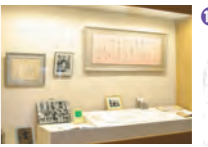
11 Sanyo Kyodo Resource Center



15 Den Wake no Kiyomaro Tomb



12 Tawawa Irrigation Aqueduct Bridge (Suspension of Stones)



16 Kiyoko Nagase Exhibition Room



KA

ndo-Exciting Adventures Camping and Experience Spots

Sensations & Experience in Nature

Blessed with abundant nature, Akaiwa City is dotted with a variety of sensations and experiences spots for children and adults to enjoy.

Use your five senses to fully enjoy the beautiful greenery and seasonal flowers!



Ryuten Astronomical Observatory Park MAP 17

Observe mysterious stars through the 400mm diameter reflective telescope.



2978-3 Nakaseijitsu, Akaiwa City TEL 086-958-2321
Holidays/Mon to Thurs
(open on public holidays. Inquire during the summer holiday period.)
P/20 Automobiles
* Opening times may change depending on weather conditions and other factors. Contact for details.
* Contact while closed: TEL 086-954-1379 (Yoshii Community Hall)

Enjoy a private romantic stargazing outing

Yoshii Ryuten Auto Campsite MAP 18

Outdoor spots with great views and plenty of facilities.



2682 Nakaseijitsu, Akaiwa City TEL 086-958-2155
Campsite
(Plot types 30, open space type 13)
5 Cottages
Holidays/None, P/50 Automobiles

Nice cottage



Okayama Forest Park German Forest MAP 20

Theme park based on a medieval German farming village. Enjoy a variety of experience menus, interactions with animals, and authentic lunch made with locally-grown products!



2006 Niborinaka, Akaiwa City TEL 086-958-2111
Weekdays/10:00-17:00 Saturdays, Sundays and Public Holidays/9:30-18:00
(Varies depending on the season and the day of the week)
Holidays/Wednesdays * Wednesdays and Thursdays from December to February are fixed holidays (open on public holidays, GW, Spring, and Summer breaks, and New Year)
P/2000 Automobiles



Ocarina Painting



Making Sausages

Akaiwa Hanameguri



Mt. Kurake



Peach Field



Sunagawa River Sakura Road



Jushichigawa River Sakura Road



Someiro Cherry Blossom

There are many spots in Akaiwa City where you can enjoy seasonal flowers, including peach and cherry blossoms in spring. Come and enjoy a soothing flower tour.

You'll feel like a princess of the British Royal Family



Kumayama English Garden MAP 19

The approximately 800 roses that bloom in early June are a masterpiece.



170-1 Tonodani, Akaiwa City
TEL 086-995-9300
Holidays/Wednesday
(closed the following day, if on a public holiday.)
End of Year/Beginning of Year (12/29-1/3)
P/80 Automobiles



Is that Momo-chan's mother??



The Biggest Peach in Japan MAP 21

Surrounded by green trees; a pink object with a diameter of 22 meters.



Kamozaki, Akaiwa City
TEL 086-955-6175
(Akaiwa City Tourist Association)
P/None

I took over the country!!



Yoshii Shiroyama Park MAP 22

A popular spot with great views of cherry blossom and azalea from the observation deck.



15-6 Susai, Akaiwa City
TEL 086-954-1366
(Industrial Construction Division, Yoshii Branch, Akaiwa City)
Holidays/Monday
P/10 Automobiles (first parking lot)
20 Automobiles (second parking lot)



23 Futsumi Camping School



24 Owarai Akasaka-tei



25 Resort House Koresato



26 Shakurenji Temple Minna no Mori



Enjoy All of Akaiwa's Prized Fruit

Akaiwa City is blessed with a warm climate and clean water. Also the birthplace of white peaches and the fruit kingdom offering a wide variety of diverse fruits. Peach Field is also famous as a tourist spot.



Akaiwa Grapes

Shine Muscat

The scent of muscat, the large fruit flesh, and the shine muscat from Akaiwa that can be eaten whole have received high praise at home and abroad.

New Pione

Large and full of sweet fruit juice, it is seedless and easy to eat. It is also perfect for gifts.

Shien Grape

Harvested from around late October to early December, this grape is seedless, easy to peel, and easy to eat. The flesh is soft and sweet. Characterized by a high and very strong sweetness.



Akaiwa Peaches

Shimizu White Peach

It is also known as the Queen of Peaches because of its distinctive sweet aroma and a lot of fruit juice. From the delicate feeling it offers, it is a popular gift and a representative fruit of Akaiwa City.

Okayama Yume White Peach

A large-sized original variety of Okayama Prefecture, it offers a lot of fruit juice. It has grown in popularity thanks to its good looks.

Hakuho White Peach

Offers low acidity, elegant and sweet fruit juice, smooth flesh that is not inferior to Shimizu White Peaches, and an elegant aroma.



Momo-chan was born in Peach Field. Anti-moth lights are nostalgic and fancy...



When you think of Okayama, you think of peaches! Of all the peaches in Okayama, Akaiwa peaches are the best.



Peach Field at Night (anti-moth lights)

A fantasy of soft lights that feels somehow nostalgic

Nishinaka, Akaiwa City
TEL 086-955-6175
(Akaiwa City Tourist Association)
Free to visit P/None
Period/Around July (Nighttime Only)



Fruit Picking

A variety of sweet and juicy fruit that grow heavily in a mild climate. The taste of harvesting your own fruit is the best.



Peach Harvesting Season

Variety	July			August		
	Early	Middle	Late	Early	Middle	Late
Shimizu White Peach						
Okayama Yume White Peach						
Hakuho White Peach						

Grape Harvesting Season

Variety	August			September			October		
	Early	Middle	Late	Early	Middle	Late	Early	Middle	Late
Shine Muscat									
New Pione									

Strawberry Harvesting Season

Variety	December			January			February		
	Early	Middle	Late	Early	Middle	Late	Early	Middle	Late
Strawberry									



Tomomien Tourism Farm

843 Odani, Akaiwa City
TEL 086-955-1928
Reservations/TEL 086-958-5444
Harvest Experience/Peaches & Grapes

Experiential Tourism Farm Yoshii Farm

1077 Niborihigashi, Akaiwa City
TEL 086-958-2553
Reservations/TEL 090-7548-0747
Harvest Experience/Peaches & Strawberries

Harada Farm

634 Yamaguchi, Akaiwa City
TEL 090-4149-4038
Harvest Experience/Grapes

Fujiwara Garden

1235-6 Nuta, Akaiwa City
TEL 086-955-6836
Harvest Experience/Peaches & Grapes & Pears

Nomaru Engei Akaiwa Farm

175-1 Kamiichi, Akaiwa City
TEL 086-956-2211
Harvest Experience/Strawberries

Nishinibo Onshitsu Cooperative Toda Farm

959-1 Shimonibo, Akaiwa City
TEL 090-1687-5748
Harvest Experience/Grapes



Atagonashi

Characterized by a rich aroma and mellow sweetness. They are several times larger than normal pears and are very juicy and delicious.

Akaiwa Pears

Pasukurasan

These are western style pears that originate from France. The Akasaka area of Akaiwa City produces 90% of the domestic pear market.

Harvested in November, they ripen thereafter. They have a mellow aroma but an intense sweetness that melts in your mouth. They are perfect from December to January, when they ripen and soften.



Niitakanashi

Highly sweet and offers a fresh and elegant flavor. These are called the king of pears because of their delicious flavor and large size.

WA

tashi-My Delicacies Specialty Products and Sake

Come and Find Your Favorite Delicacies

In Akaiwa City, we have people who grow the finest vegetables and fruit, and people who use them to make delicious foods. They collaborate well to produce one delicious meal after another. Come to Akaiwa to search for all the delicious foods!

Akaiwa Specialties



Koresato Burdock

Produced in the Koresato district, on a plateau at an altitude of about 300 to 350 meters. Made in the red clay soil. Each one is carefully harvested. Very flavorful and soft to the center; perfect for a variety of dishes.



Asahi Rice

Akaiwa City has the perfect soil and water for growing delicious rice. The harvested Asahi rice is a large-grained rice, with a moderate stickiness and deep flavor.



Black Soybeans

The black soybean grown in the Kumayama region is called "Tanba Black Soybean" and is the most nutritious of all soybeans.



Yellow Leeks

Highly nutritious; high-quality ingredient. Characterized by a crisp texture that is sweeter and softer than normal leeks.

Akaiwa Farmer's Stands

Offering seasonal vegetables and fresh fruit, and various agricultural products that use them, and others. Farmer's stands are available throughout the city. They have a good stock of delicious and safe Akaiwa products.



Sanyo Aozora Market Momonosato Store
502 Shimoichi, Akaiwa City
TEL 086-955-7889
P/Available



Akasaka Aozora Market
46-2 Higashikubota, Akaiwa City
TEL 086-957-2234
P/Available



Kumayama Agricultural Products Direct Sales Center
158-3 Sawahara, Akaiwa City
TEL 086-995-9500
P/Available



Fureai Market Wakahime No Sato
561-1 Maya, Akaiwa City
TEL 086-229-1101
P/Available, Bicycle Rentals Available



Yoshii Specialty Shop
500 Fukuda, Akaiwa City
TEL 086-954-1955
P/Available



Enjoy the natural blessings of Akaiwa



Local sake produced by skilled craftsmen using the natural abundance available in Akaiwa

Enjoy the Japanese sake and wine unique to Akaiwa City, including that of the sake brewery that produces Japanese sake that uses Asahi rice harvested in the Akaiwa region, and the phantom sake rice called Omachi rice, and of the winery that uses locally grown grapes.



Koresato Wine Brewery

Produces fruity wines made from the grapes of Koresato. The flavor is attained through the talent that won a domestic wine competition.

1356-1 Niborinaka, Akaiwa City
Okayama Forest Park German Forest
TEL 086-958-2888

* Requires entry to the German Forest
P/Available (Use the parking lot of German Forest)



Akaiwa Sake Brewery

Founded in 1923. The Omachi rice and Asahi rice are steamed in a traditional Japanese kettle, offering rich brewed sake flavor.

1113 Komoto, Akaiwa City
TEL 086-955-0130 Free tours
P/Available



Muromachi Sake Brewery

Founded around 1688. The carefully brewed sake has won the highest gold medal in numerous contests.

1342-1 Nishinaka, Akaiwa City
TEL 086-955-0029
P/Available



Toshimori Sake Brewery

A brewery that has revived Omachi rice and has been cultivated by the local water and the local climate. Aims for consistent production from rice growing to sake brewing.

762-1 Nishikarube, Akaiwa City
TEL 086-957-3117
P/Available



Ride Your Bike and Feel the Akaiwa Breeze

Under the clear sky of the sunny countryside in Okayama, take a tour of the famous Akaiwa sights riding through the breeze. When you take a commemorative photo at the power spots or a scenic spots, you will feel uplifted.



Route Legend

- Kamiyadoru Pass Course
- Kibi-no-Kuni Fruit & Legend Course
- Kazekaoru Kumayama Breeze Try Course
- Katatetsu Rail Romance Road

Akaiwa City Website
<https://www.city.akaiwa.lg.jp/kankou/index.html>



Akaiwa City Tourist Association Website
<https://akaiwa-kankou.jp/>



Events, Harvests

Make Lots of Memories

Seasonal flowers, the blessings of nature; tastes from the changing seasons. We have festivals where you can enjoy fireworks illuminating the summer night sky, to the grand festivals of ancient shrines, and civic events. In addition, we have a variety of events that can be enjoyed for adults and children, including the four seasons of Akaiwa's fruit and vegetables that you can enjoy throughout the year.

Month	Seasonal Foods/Main Events				
April	Sakura Festival	Strawberries			Shiitake Mushrooms
May	Roses in Full Bloom		New Pione	Shine Muscat	Long Eggplant
June		Peaches			Yellow Leeks
July					Endive
August	Summer Festival				
September					
October		Niitakanashi	Pasukurasan	Shien Grape	Persimmon
November	Autumn Festival, Wine Festival	Atagonashi			Koresato Burdock
December					
January		Strawberries			
February					
March					

Yoshii Ryuten Auto Campsite

Outdoor spots with great views and plenty of facilities.
 2682 Nakaseijitsu, Akaiwa City
 TEL 086-958-2155
 Campsite (Plot types 30, open space type 13)
 5 Cottages
 Holidays/None, P/Available



Resort House Koresato
 3121-1 Koresato, Akaiwa City
 TEL 086-954-0440
 Holidays/None, P/Available



Futsumi Camping School
 1868-1 Ogamo, Akaiwa City
 TEL 086-957-4825
 (Yoshii Exchange Promotion Center)
 Holidays/Monday, P/Available



Akasaka Tekijuku
 668 Yuzuri, Akaiwa City
 TEL 086-957-4824
 (Industrial Construction Division, Akasaka Branch)
 Holidays/Year-end, New Years, P/Available



Relax Your Mind and Body in Nature

Cottages on tent sites in campsites, accommodation with views of the abundant nature. Too much relaxation and you may not want to go home.